

How to Solar Eclipse Safely In


Beavers Bend
Cabin Country

Wear Eclipse Glasses



You must wear special glasses to avoid eye injury. Plan ahead and buy early. Local vendors are expected to have limited stock.

Prepare for Emergencies



Additional police, fire, and EMT posts will be set up, but response times may be longer than normal. Have a first aid kit just in case.

Put Out Campfires



Do not light a campfire during the eclipse. High winds may occur and emergency responses may be delayed due to traffic.

Keep Animals Safe



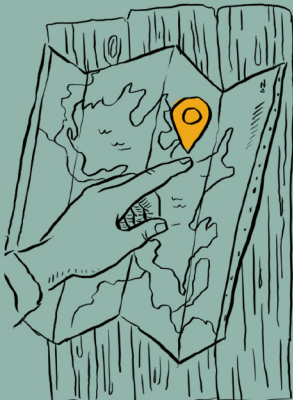
Pets and wildlife will be confused. Keep pets indoors or securely leashed. If wildlife approaches, do not pet or feed them.

Get Essentials In Advance



Excessive traffic is expected. Avoid having to get out by stocking up on groceries and gasoline ahead of time.

Plan Your View Site



Help minimize traffic by watching from your cabin or arriving at your chosen location a few hours in advance.

Keep in Mind

During totality, the sky will darken similar to dusk or dawn and temperatures will drop 10-15 degrees. Birds will quiet and dogs may bark.

Due to a large influx of visitors, businesses may have long waits, limited capacity, scaled down menus, or restroom restrictions.

It's a good idea to carry cash. Internet service may be interrupted and vendors may not be able to accept cards.

When:

Monday, April 8, 2024

- ★ 12:28pm - Partial begins
- ★ 1:45pm - Totality begins
- ★ 1:50pm - Totality ends
- ★ 3:06pm - Partial ends



For more information and resources:
beaversbendcabincountry.com/eclipse
[@beaversbendok](https://twitter.com/beaversbendok) / [#GetHereAlready](https://twitter.com/GetHereAlready)