

### Tourist Tips!

- Don't litter.
- Don't feed the wildlife.
- Move away from river banks when the dam siren is on.
- Wear a life vest.
- Secure your food - raccoons and black bears can be smart!
- Stay hydrated.
- Be kind.

## Download the App

Download on the App Store  
 GET IT ON Google Play

### Helpful Phone Numbers

Beavers Bend State Park	580-494-6300	McCurtain County Sheriff's Dept.	580-286-3331
Broken Bow Chamber of Commerce	580-584-3393	McCurtain Memorial Hospital	580-286-7623
Broken Bow Fire Department	580-584-2424	Oklahoma Department of Wildlife Conservation	405-521-3851
EMS	580-584-2800	US Army Corps of Engineers (Broken Bow Lake)	580-286-7623
Forestry Services (Report a fire)	580-584-3351	US Army Corps of Engineers (Pine Creek Lake)	580-933-4239
Idabel Chamber of Commerce	580-286-3305	US Forestry (Welcome Center, Hochatown Office)	580-494-6402
Little River National Wildlife Refuge	580-584-6211	Valliant Chamber of Commerce	580-933-5050
		Wright City Chamber of Commerce	580-981-7071

### WILDFIRE PREPARATION

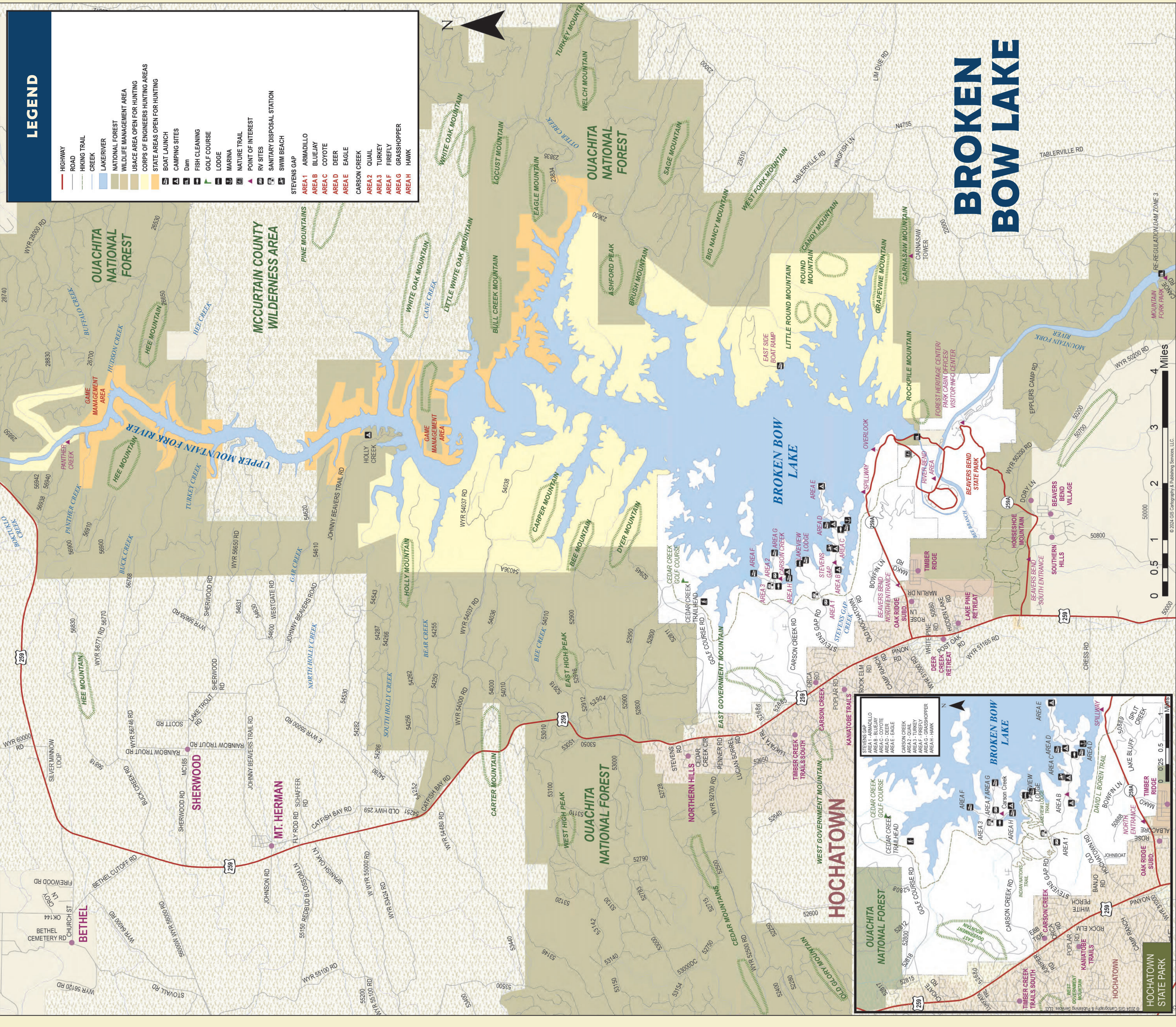
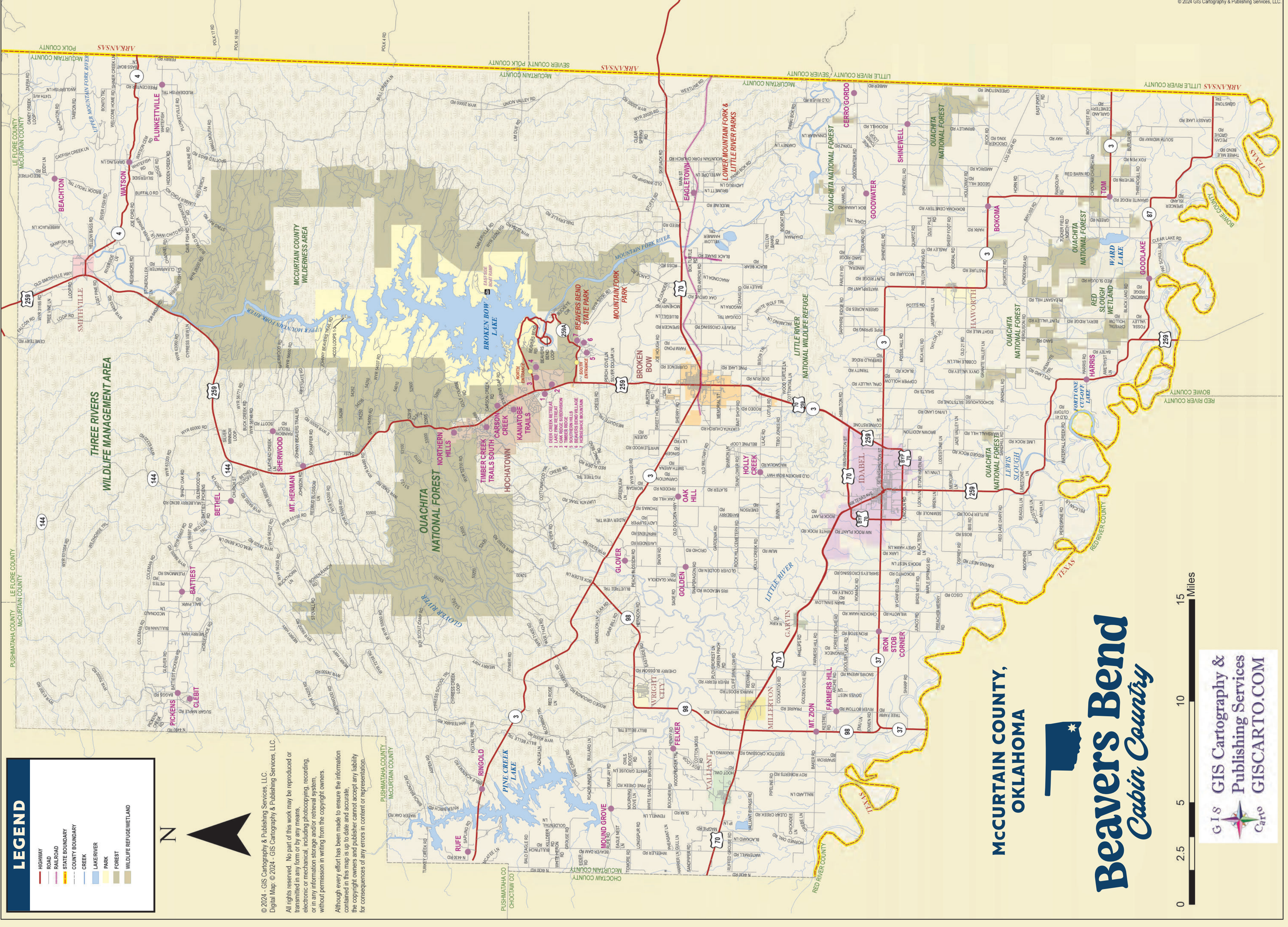
[SAFESTAYOK.ORG](http://SAFESTAYOK.ORG)  
OKLAHOMA FORESTRY SERVICES

## Beavers Bend Cabin Country

Broken Bow • Hochatown • Idabel

[beaversbendcabincountry.com](http://beaversbendcabincountry.com)  
 Official Tourist Map





# BROKEN BOW LAKE

**McClurtain County, Oklahoma**

**Beavers Bend Cabin Country**

GIS Cartography & Publishing Services  
**GISCARTO.COM**

© 2024, GIS Cartography & Publishing Services, LLC  
 Digital Map © 2024, GIS Cartography & Publishing Services, LLC  
 All rights reserved. No part of this work may be reproduced or transmitted in any form or by any means, electronic, mechanical, photocopying, recording, or by any information storage and retrieval system, without permission in writing from the copyright owner.  
 Although every effort has been made to ensure the information contained in this map is up to date and accurate, the publisher and cartographer assume no liability for consequences of any errors in content or representation.